



Everything is
possible

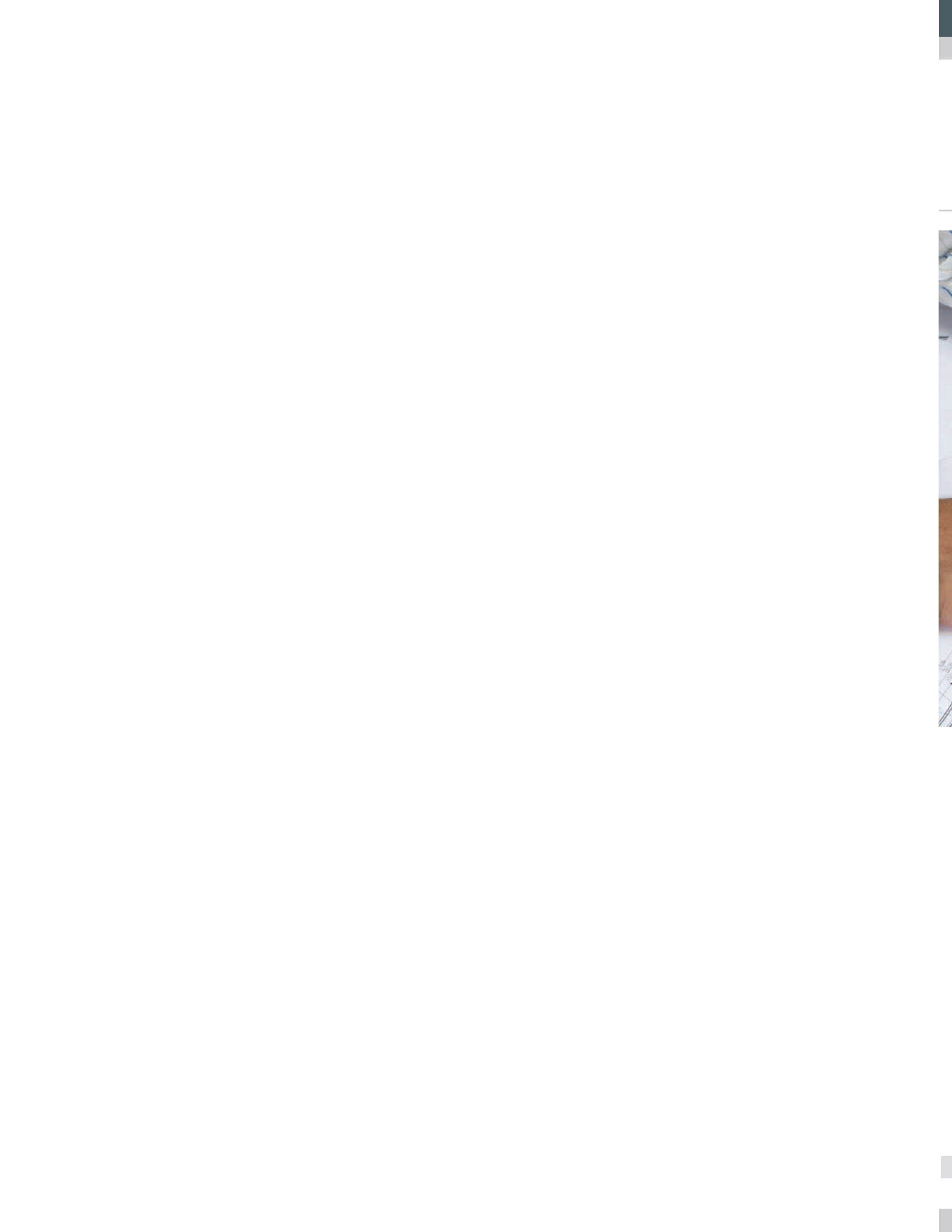


LAMSON

Est 1898

Tecnilab[®]

Group
european
technology





A PROJECT WHICH RESPECTS THE STRICT STANDARDS OF EUROPEAN QUALITY

- PRELIMINARY FEASIBILITY ANALYSIS
- RESEARCH AND DEVELOPMENT
- PERSONALIZED SOLUTIONS
- PERMANENT SUPPORT
- CONSTANT QUALITY CONTROL
- FINANCIAL ASSISTANCE
- POST SALES SERVICE

ISO 9001

BUREAU VERITAS
 Certification



AUTOMATION AND HIGH-TECHNOLOGY

Tecnilab is now one of the most important leading actors in the world of automation and high-technology industry. This is the result of 40 years' experience in designing, manufacturing and marketing high-technology products.

COMMITMENT TO RESEARCH AND DEVELOPMENT

Tecnilab, thanks to a constant and careful investment strategy, has strengthened its position as a leader in the market. Indeed, our engineers continuously design, test and develop different systems in order to create innovative products.

Recently the company doubled the production surface area in order to grant higher performance and punctuality standards and to satisfy the clients' needs fully.

ISO 9001 PRODUCTION STANDARDS GRANTED

Tecnilab operates a complete control over every step of the manufacturing process. Furthermore, all our company departments, such as the administrative, the accountancy and sales offices, all fall within precise quality standards.

FEASIBILITY STUDY

After a precise analysis of the work of your pharmacy, our specialists will provide you with the best solution in relation to your needs. Today, thanks to a complete range of products, we are able to create automation systems suitable for every typology of pharmacy.

- Mobile loading device
- Radio scanner
- PC - Assistant loading
- Vertical select
- Modularity



MODULARITY

The Twintec with its 1,40 or 2,80 mt. modules is configurable and adaptable (on the same line, on L, on 2 lines...)



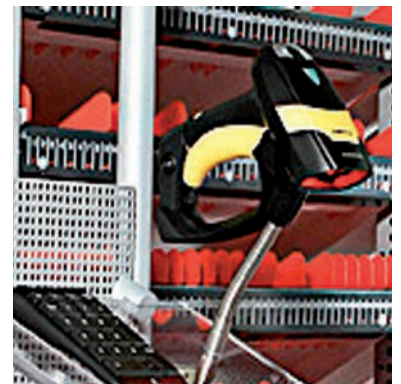


MOBILE LOADING DEVICE

This device allows the operator to perform the loading procedures with the best comforts. This device helps the operator with the loading operations providing more comfort in the procedure.

THE RADIO SCANNER

The radio scanner reads CIP, EAN 13 and DATAMATRIX codes from considerable distance in order to refill the stock with the maximum efficiency. This saves time while searching for products and entails continuous and fast availability of medicines in the pharmacy



THE PC-ASSISTED LOADING

A led indicator system, with a vocal assistance, gives the operator the opportunity to easily find the drawer which necessitates to be refilled. This saves time and minimizes stock errors.

THE VERTICAL SELECT SYSTEM

This is a moving conveyor belt system characterized by upward and downward movements within the module of the machine. This multi-picking system enables even the most fragile box to be safely controlled. Furthermore, it does not matter where the products are loaded, in every part of the automation.



- Smart robot
- Restless optimization
- Smart-express loading
- Automatic loading system
- Interactivity



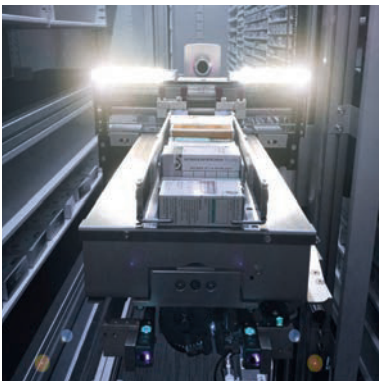
THE INTERACTIVITY

A simple way to communicate with the robot making it easy and intuitive.

With a single touch on the icons it is possible to surf the user interface.



ET: EvoTec



A SMART ROBOT

The Evotec has a smart stock management system. The multi-picking function uses the same operation for identical boxes or different products. The machine is configurable with one or two robotic arms. In the second case, the two have the same functions. The second arm moves autonomously, but during the busy workflows they work together, in unison. With a 180-degree rotation on its axis, each robotic arm is able to load or unload products on the right or left shelves. All these aspects aim to optimize the movements, the available space and the unload speed.

RESTLESS OPTIMIZATION

Your stock is entrusted to a thinking system. The storage area is divided into virtual drawers that follow space-saving criteria that allow a saving of 30–40% space compared to the traditional systems.

The robot constantly runs stock optimizations in order to grant the best performances for a smooth workflow in the pharmacy. The system divides the products in classes and, depending on their sales records, it chooses the best location for them.



SMART-EXPRESS LOADING

The efficacy of the loading system is unique. We added two new loading features to the traditional method: Multi-product Multi-boxes and Mono-product Multi-box. These new functions allow the pharmacist to introduce a set of several boxes together in only one load cycle. This original method of loading is defined as a 'high-density system' and it capitalizes the storage capacity.

AUTOMATIC LOADING SYSTEM

The automatic loading module takes care of the products once they are fed in a capacious storage 'lung'. Then, the system sorts, controls and sends the products towards the storage area. This process is fast and totally automatic.



MODULARITY
& FLEXIBILITY

- Sequential system
- Transfertec
- Automatic loading system
- Intelligent assistant
- As optional



AS OPTIONAL

The automatic loader explorer can be featured with a belt extension on the right side of the Dreamtec. This additional belt increases four times the capacity of the automatic loader, this allows to load more and more boxes at the same time.



DT: DreamTec

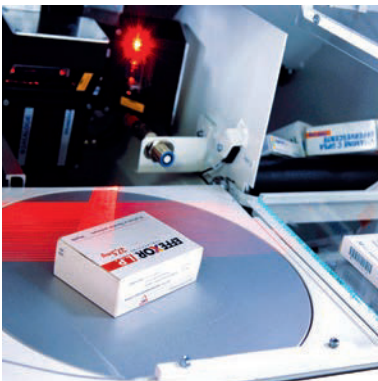


A SEQUENTIAL SYSTEM

The Dreamtec is a hybrid system. It combines the strengths of a system with real drawers with the storage density advantages of the virtual drawers. This kind of full stock management is a unique and distinctive feature in the Automation world. This system is defined as sequential because it allows the user to manage three independent working lines at the same time. This means loading the products, storing them on the high rotation or low rotation shelves and unloading them at the same time.

TRANSFERTEC SYSTEM

Transfertec is software combined with a conveyor belt which further accelerates the delivery time of the products. It manages the overstock of high-rotation products and refills the drawers as soon as they run empty.



AUTOMATIC LOADING SYSTEM

The automatic loading module takes care of the products once they are fed in a capacious storage 'lung'. Then, the system sorts, controls and sends the products towards the storage area. This process is fast and totally automatic.

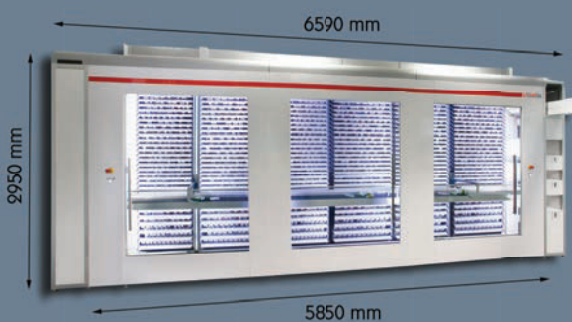
THE PHARMACIST'S INTELLIGENT ASSISTANT

Dreamtec is more than a mere automation system; it is a logistic assistant for the pharmacist. Thanks to a self-learning system, the advanced software calculates the products' demand to guarantee balanced storage and optimal functioning of the pharmacy workflow.



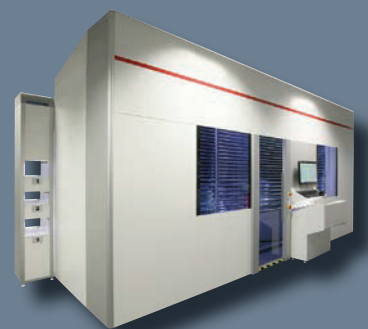
A CLEVER
ASSISTANT

- Optimized loading procedure
- Ultra-fast unloading system
- Independent ejectors
- Manager software
- Dimensions, configurations and capacity



DIMENSIONS, CONFIGURATIONS E CAPACITY

UniTec is available in two versions: UniTec 39 (dimensions: L 3950 x W 2500 x H 3000 mm (unloading towers excluded)) and UniTec 58 (dimensions: L 5850 x W 2500 x H 3000 mm (unloading towers excluded)). Available in 4 or 6 columns of shelves respectively, with a storage capacity of approximately 13.500 (UniTec 39) and 19.000 (UniTec 58) items.





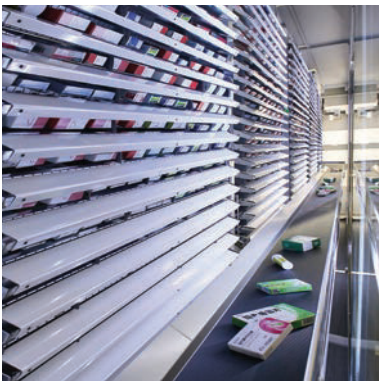
OPTIMIZED LOADING PROCEDURE

The items can be loaded by means of the barcode reader, selected from the inventory or chosen among the below stock products. The state-of-the-art software will indicate the correct channel where to insert the items via lighting directives, among the six available channels.

Each channel may contain several packs depending on the item's dimensions. This system allows to achieve the maximum possible speed in the loading procedure.

ULTRA-FAST UNLOADING SYSTEM

The dispensing system combines the simultaneous ejection of packs from the channels with the vertical movements of the unloading conveyor belt. The conveyor belt moves up and down without stopping while the channels dispense the packs which are then delicately collected by the conveyor belt. Heavy or fragile packages can then be placed anywhere in the machine and not only in the lower section. The belt moves also bidirectionally enabling to unload both to the left and to the right. This advanced system allows for an ultra-fast unload of the items (about 2.400 packs/h).



INDEPENDENT EJECTORS

UniTec allows for an ultra-fast unload of the items as it is unhampered by the conveyor belt.

Indeed each channel is equipped with its own ejector which enables to unload several packs at the same time. Item unload is fast because the belt does not stop at each shelf waiting for the pack to come down, but it benefits from this continual and flowing motion as the ejectors can unload simultaneously.

MANAGER SOFTWARE

The ergonomical workstation is equipped with an intuitive and user-friendly user interface, guiding icons, a 27" touchscreen monitor, an analysis software capable of effectively managing and optimizing the stock.

The software is perfectly compatible and integrated with pharmacy management softwares.





AIRTEC



PNEUMATIC TUBES





TOBOGGANS



LIFTS

Tecnilab is the only company that proposes and guarantees a technical assistance service for every system of transport of the automation (pneumatic belts, lifts, slides and toboggans made to measure).

The pneumatic Airtec system is designed and realized entirely by Tecnilab and every system of transport is personalized to the clients' specification (colours, position of slides and pneumatic tubes, acoustic shock absorbers, etc...).

All the automation systems therefore are concealed and created in order to be perfectly suitable for every kind of pharmacy and this versatility makes Tecnilab products unique.



DELIVERY POINTS





Supporting the customer step by step



OUR STAFF:

The Tec-24 Team is composed of technicians whose aim is to assist the pharmacist in the post-selling period. These specialists are trained on all the technical processes of the automation such as production, installation and use. Therefore they are experts both on the functioning of the automation and on the selling dynamics of the pharmaceutical market. This service is provided 24/7. We provide service worldwide, hence our staff are multilingual.

REMOTE ASSISTANCE:

The technical assistance service is extremely effective and simple since all the automation can be controlled from remote software. This system makes the machine visible in all its parts to overcome most of

the potential problems. Many cameras are positioned in strategic positions of the machine and they make possible a constant visual control through which it is possible to control and record all the movements of the automation.

Nevertheless, if the remote assistance was not enough, Tecnilab assures the personal presence of a specialized staff.

CRM QUALITY:

Thanks to its CRM Software (Customer Relationship Management), Tecnilab has always provided its clients with a high-quality service. Indeed, the CRM allows the control over the quality of the technical service provided and the subsequent satisfaction of the customer.

TRAINING THROUGHOUT TIME:

The pharmacists' training is a fundamental phase of the automatization process of every pharmacy. The transmission of knowledge from our specialists to the clients is essential for effective use of the system. The training includes the study of all the specifics of hardware and software. This training period is an opportunity which Tecnilab gives to the clients in order to fully understand the automation system and subsequently maximize the level of productivity of the pharmacy.





Lamson Healthcare Solutions

Head Office:
3 Sheridan Close
Milperra NSW 2214

Tel.: 02 9743 9322
Fax: 02 9743 8569
info@lamson.com.au
www.lamson.com.au

www.lamson.com.au

